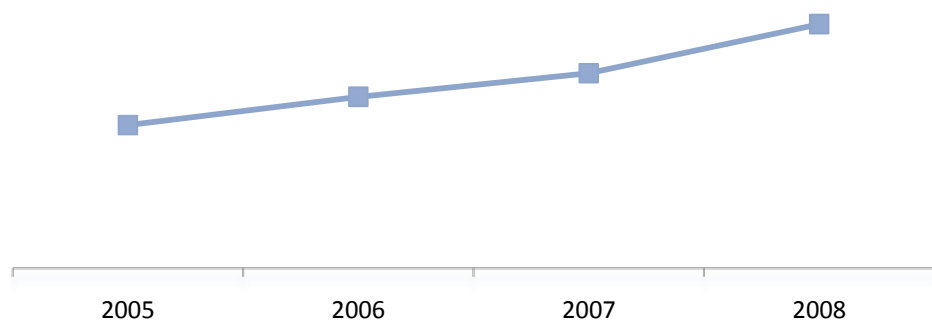


# Suriname

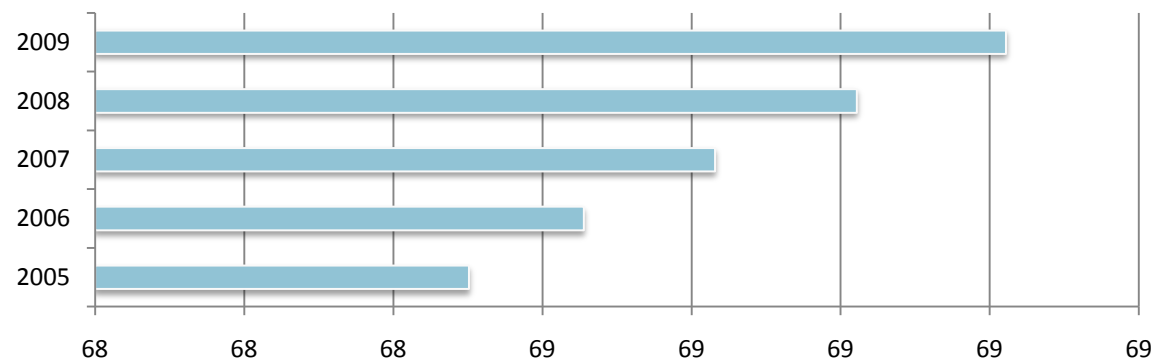
## Gross Domestic Product

Year	US\$
2005	1,777,530,567
2006	2,130,262,442
2007	2,423,523,222
2008	3,033,096,756
2009	-



## Life expectancy at birth, total (years)

Year	Years
2005	69
2006	69
2007	69
2008	69
2009	69



## Other Indicators

External debt stocks (% of GNI), 2008

0.00

Unemployment, total (% of total labor force), 2009

-

Merchandise trade (% of GDP), 2009

-

Source: World Bank

Indicator	2005	2006	2007	2008	2009	2010
Agricultural machinery, tractors	869.00	758.00	885.00	1,013.00	-	-
Fertilizer consumption (% of fertilizer production)	-	-	-	-	-	-
Fertilizer consumption (kilograms per hectare of aral	106.37	195.28	149.43	526.27	-	-
Agricultural land (sq. km)	738.00	708.00	710.00	748.00	-	-
Agricultural land (% of land area)	0.47	0.45	0.46	0.48	-	-
Arable land (hectares)	49,000.00	46,000.00	46,000.00	49,000.00	-	-
Arable land (hectares per person)	0.10	0.09	0.09	0.10	-	-
Arable land (% of land area)	0.31	0.29	0.29	0.31	-	-
Land under cereal production (hectares)	45,587.00	44,252.00	42,105.00	43,666.00	43,666.00	-
Permanent cropland (% of land area)	0.04	0.04	0.04	0.04	-	-
Forest area (sq. km)	147,760.00	-	-	-	-	147,580.00
Forest area (% of land area)	94.72	-	-	-	-	94.60
Agricultural irrigated land (% of total agricultural land	-	-	-	-	-	-
Average precipitation in depth (mm per year)	-	-	-	2,331.00	-	-
Land area (sq. km)	156,000.00	156,000.00	156,000.00	156,000.00	156,000.00	-
Agricultural machinery, tractors per 100 sq. km of ar	177.35	164.78	192.39	206.73	-	-
Cereal production (metric tons)	164,011.00	182,705.00	179,061.00	182,904.00	182,904.00	-
Crop production index (1999-2001 = 100)	95.00	105.00	107.00	111.00	111.00	-
Food production index (1999-2001 = 100)	97.00	105.00	115.00	111.00	111.00	-
Livestock production index (1999-2001 = 100)	107.00	100.00	130.00	115.00	115.00	-
Surface area (sq. km)	163,820.00	163,820.00	163,820.00	163,820.00	163,820.00	-
Cereal yield (kg per hectare)	3,597.70	4,128.70	4,252.70	4,188.70	4,188.70	-
Trade in services (% of GDP)	31.27	23.57	23.19	22.51	-	-
Communications, computer, etc. (% of service impor	-	-	-	-	-	-
Income payments (BoP, current US\$)	64,400,000.00	79,600,000.00	35,400,000.00	21,500,000.00	24,500,000.00	-
Imports of goods and services (BoP, current US\$)	1,540,900,000.00	1,281,900,000.00	1,502,500,000.00	1,747,800,000.00	1,580,800,000.00	-
Insurance and financial services (% of service impor	1.46	1.65	1.66	1.95	1.89	-
Goods imports (BoP, current US\$)	1,189,100,000.00	1,013,400,000.00	1,185,300,000.00	1,349,700,000.00	1,295,500,000.00	-
Service imports (BoP, current US\$)	351,800,000.00	268,500,000.00	317,200,000.00	398,100,000.00	285,300,000.00	-
Royalty and license fees, payments (BoP, current U	-	-	2,500,000.00	2,600,000.00	-	-
Imports of goods, services and income (BoP, curren	1,605,300,000.00	1,361,500,000.00	1,537,900,000.00	1,769,300,000.00	1,605,300,000.00	-
Transport services (% of service imports, BoP)	38.37	23.49	20.69	22.61	22.12	-
Travel services (% of service imports, BoP)	4.80	6.82	6.94	7.61	11.22	-
Foreign direct investment, net outflows (% of GDP)	-	-	-	-	-	-
Private current transfers, payments (BoP, current U\$	30,200,000.00	37,600,000.00	62,400,000.00	50,500,000.00	53,200,000.00	-
Workers' remittances and compensation of employe	9,500,000.00	4,100,000.00	64,800,000.00	8,200,000.00	5,100,000.00	-
Current account balance (BoP, current US\$)	(143,600,000.00)	110,400,000.00	184,900,000.00	353,000,000.00	209,500,000.00	-
Current account balance (% of GDP)	(8.08)	5.18	7.63	11.64	-	-
Net income (BoP, current US\$)	(40,400,000.00)	(51,600,000.00)	8,200,000.00	20,700,000.00	5,300,000.00	-
Net trade in goods and services (BoP, current US\$)	(125,300,000.00)	126,100,000.00	101,200,000.00	244,900,000.00	110,200,000.00	-
Net trade in goods (BoP, current US\$)	22,400,000.00	161,000,000.00	173,700,000.00	358,400,000.00	108,800,000.00	-
Net errors and omissions, adjusted (BoP, current U\$	169,375,162.91	144,869,849.45	160,982,259.39	(241,717,951.10)	(41,158,724.19)	-
Foreign direct investment, net (BoP, current US\$)	27,900,000.00	(163,400,000.00)	(246,700,000.00)	(233,600,000.00)	(93,400,000.00)	-
Private capital flows, total (BoP, current US\$)	25,900,000.00	(163,700,000.00)	(248,000,000.00)	(250,500,000.00)	(104,200,000.00)	-
Private capital flows, total (% of GDP)	1.46	(7.68)	(10.23)	(8.26)	-	-
Portfolio investment, excluding LCFAR (BoP, curren	(2,000,000.00)	(300,000.00)	(1,300,000.00)	(16,900,000.00)	(10,800,000.00)	-
Changes in net reserves (BoP, current US\$)	(19,675,162.91)	(94,069,849.45)	(176,882,259.39)	(52,382,048.90)	(193,104,739.32)	-
Net current transfers (BoP, current US\$)	22,100,000.00	35,900,000.00	75,500,000.00	87,400,000.00	94,000,000.00	-
Net capital account (BoP, current US\$)	14,500,000.00	19,300,000.00	8,100,000.00	31,900,000.00	87,400,000.00	-
ICT service exports (BoP, current US\$)	-	-	-	-	-	-

ICT service exports (% of service exports, BoP)	-	-	-	-	-	-
Communications, computer, etc. (% of service exports, BoP)	43.46	48.54	64.00	65.74	70.77	-
Income receipts (BoP, current US\$)	24,000,000.00	28,000,000.00	43,600,000.00	42,200,000.00	29,800,000.00	-
Exports of goods and services (BoP, current US\$)	1,415,600,000.00	1,408,000,000.00	1,603,700,000.00	1,992,700,000.00	1,691,000,000.00	-
Insurance and financial services (% of service exports, BoP)	0.33	0.34	0.47	0.40	0.41	-
Goods exports (BoP, current US\$)	1,211,500,000.00	1,174,400,000.00	1,359,000,000.00	1,708,100,000.00	1,404,300,000.00	-
Service exports (BoP, current US\$)	204,100,000.00	233,600,000.00	244,700,000.00	284,600,000.00	286,700,000.00	-
Royalty and license fees, receipts (BoP, current US\$)	-	-	100,000.00	-	-	-
Exports of goods, services and income (BoP, current US\$)	1,439,600,000.00	1,436,000,000.00	1,647,300,000.00	2,034,900,000.00	1,720,800,000.00	-
Transport services (% of service exports, BoP)	34.36	10.53	8.32	6.67	6.64	-
Travel services (% of service exports, BoP)	21.85	40.58	27.22	27.20	22.18	-
Foreign direct investment, net inflows (BoP, current US\$)	27,900,000.00	(163,400,000.00)	(246,700,000.00)	(233,600,000.00)	(93,400,000.00)	-
Foreign direct investment, net inflows (% of GDP)	1.57	(7.67)	(10.18)	(7.70)	-	-
Portfolio equity, net inflows (BoP, current US\$)	-	-	-	-	-	-
Current transfers, receipts (BoP, current US\$)	52,300,000.00	73,500,000.00	137,900,000.00	137,900,000.00	147,200,000.00	-
Workers' remittances, receipts (BoP, current US\$)	1,500,000.00	100,000.00	137,500,000.00	100,000.00	900,000.00	-
Workers' remittances and compensation of employees, receipts (BoP, current US\$)	3,900,000.00	2,100,000.00	139,900,000.00	2,200,000.00	4,800,000.00	-
Workers' remittances and compensation of employees, receipts (% of service exports, BoP)	0.22	0.10	5.77	0.07	-	-
Financing via international capital markets (gross inflows, current US\$)	-	-	-	-	-	-
S&P Global Equity Indices (annual % change)	-	-	-	-	-	-
Market capitalization of listed companies (current US\$)	-	-	-	-	-	-
Market capitalization of listed companies (% of GDP)	-	-	-	-	-	-
Listed domestic companies, total	-	-	-	-	-	-
Stocks traded, total value (current US\$)	-	-	-	-	-	-
Stocks traded, total value (% of GDP)	-	-	-	-	-	-
Stocks traded, turnover ratio (%)	-	-	-	-	-	-
Net bilateral aid flows from DAC donors, Australia (current US\$)	-	-	-	-	-	-
Net bilateral aid flows from DAC donors, Austria (current US\$)	-	-	-	-	20,000.00	-
Net bilateral aid flows from DAC donors, Belgium (current US\$)	1,180,000.00	1,290,000.00	540,000.00	1,620,000.00	2,010,000.00	-
Net bilateral aid flows from DAC donors, Canada (current US\$)	790,000.00	320,000.00	1,270,000.00	250,000.00	1,450,000.00	-
Net bilateral aid flows from DAC donors, European Union (current US\$)	5,960,000.00	2,580,000.00	22,050,000.00	24,710,000.00	26,800,000.00	-
Net bilateral aid flows from DAC donors, Switzerland (current US\$)	-	-	-	-	-	-
Net bilateral aid flows from DAC donors, Germany (current US\$)	60,000.00	70,000.00	50,000.00	10,000.00	40,000.00	-
Net bilateral aid flows from DAC donors, Denmark (current US\$)	-	-	-	-	-	-
Net bilateral aid flows from DAC donors, Spain (current US\$)	-	-	-	-	140,000.00	-
Net bilateral aid flows from DAC donors, Finland (current US\$)	-	10,000.00	-	80,000.00	80,000.00	-
Net bilateral aid flows from DAC donors, France (current US\$)	1,220,000.00	1,650,000.00	3,550,000.00	580,000.00	4,160,000.00	-
Net bilateral aid flows from DAC donors, United Kingdom (current US\$)	-	-	-	-	-	-
Net bilateral aid flows from DAC donors, Greece (current US\$)	-	10,000.00	40,000.00	-	-	-
Net bilateral aid flows from DAC donors, Ireland (current US\$)	-	-	-	-	-	-
Net bilateral aid flows from DAC donors, Italy (current US\$)	-	16,310,000.00	-	-	-	-
Net bilateral aid flows from DAC donors, Japan (current US\$)	200,000.00	450,000.00	2,910,000.00	3,930,000.00	260,000.00	-
Net bilateral aid flows from DAC donors, Korea, Rep. of (current US\$)	60,000.00	80,000.00	260,000.00	-	-	-
Net bilateral aid flows from DAC donors, Luxembourg (current US\$)	-	-	-	-	-	-
Net bilateral aid flows from DAC donors, Netherlands (current US\$)	29,200,000.00	34,300,000.00	124,040,000.00	67,580,000.00	115,510,000.00	-
Net bilateral aid flows from DAC donors, Norway (current US\$)	-	-	-	-	-	-
Net bilateral aid flows from DAC donors, New Zealand (current US\$)	-	-	-	-	-	-
Net bilateral aid flows from DAC donors, Portugal (current US\$)	-	-	-	-	-	-
Net bilateral aid flows from DAC donors, Sweden (current US\$)	-	-	-	-	-	-
Net bilateral aid flows from DAC donors, Total (current US\$)	39,530,000.00	58,240,000.00	145,910,000.00	98,660,000.00	151,110,000.00	-
Net bilateral aid flows from DAC donors, United States (current US\$)	860,000.00	1,170,000.00	(8,800,000.00)	(100,000.00)	640,000.00	-
External debt stocks, total (DOD, current US\$)	-	-	-	-	-	-

External debt stocks (% of GNI)	-	-	-	-	-	-
Use of IMF credit (DOD, current US\$)	-	-	-	-	-	-
External debt stocks, long-term (DOD, current US\$)	-	-	-	-	-	-
External debt stocks, private nonguaranteed (PNG)	-	-	-	-	-	-
External debt stocks, public and publicly guaranteed	-	-	-	-	-	-
External debt stocks, short-term (DOD, current US\$)	-	-	-	-	-	-
Short-term debt (% of total reserves)	-	-	-	-	-	-
Short-term debt (% of exports of goods, services and	-	-	-	-	-	-
Short-term debt (% of total external debt)	-	-	-	-	-	-
IBRD loans and IDA credits (DOD, current US\$)	-	-	-	-	-	-
Present value of external debt (current US\$)	-	-	-	-	-	-
Present value of external debt (% of exports of goods	-	-	-	-	-	-
Present value of external debt (% of GNI)	-	-	-	-	-	-
Net financial flows, bilateral (NFL, current US\$)	-	-	-	-	-	-
Portfolio investment, bonds (PPG + PNG) (NFL, current	-	-	-	-	-	-
Net official flows from UN agencies, IAEA (current US\$)	-	-	-	-	-	-
Net official flows from UN agencies, IFAD (current US\$)	-	-	-	-	-	-
Net financial flows, IMF concessional (NFL, current US\$)	-	-	-	-	-	-
Net financial flows, IMF nonconcessional (NFL, current	-	-	-	-	-	-
Net financial flows, IBRD (NFL, current US\$)	-	-	-	-	-	-
Net financial flows, IDA (NFL, current US\$)	-	-	-	-	-	-
Net financial flows, multilateral (NFL, current US\$)	-	-	-	-	-	-
Net financial flows, others (NFL, current US\$)	-	-	-	-	-	-
Commercial banks and other lending (PPG + PNG)	-	-	-	-	-	-
Net financial flows, RDB concessional (NFL, current	-	-	-	-	-	-
Net financial flows, RDB nonconcessional (NFL, current	-	-	-	-	-	-
Net official flows from UN agencies, UNAIDS (current	50,000.00	30,000.00	20,000.00	-	-	-
Net official flows from UN agencies, UNICEF (current	-	-	-	-	-	-
Net official flows from UN agencies, UNHCR (current	-	-	-	-	-	-
Net official flows from UN agencies, UNDP (current	-	-	-	-	320,000.00	-
Net official flows from UN agencies, UNECE (current	-	-	-	-	-	-
Net official flows from UN agencies, UNFPA (current	-	-	-	-	-	-
Net official flows from UN agencies, UNRWA (current	-	-	-	-	-	-
Net official flows from UN agencies, UNTA (current	610,000.00	350,000.00	350,000.00	50,000.00	50,000.00	-
Net official flows from UN agencies, WFP (current	-	-	-	-	-	-
Net official flows from UN agencies, WHO (current	-	-	-	-	-	-
Net official development assistance and official aid r	44,170,000.00	64,220,000.00	150,870,000.00	101,500,000.00	157,090,000.00	-
Net official development assistance and official aid r	54,000,000.00	76,560,000.00	163,570,000.00	101,500,000.00	162,690,000.00	-
Net official aid received (current US\$)	-	-	-	-	-	-
Net official aid received (constant 2008 US\$)	-	-	-	-	-	-
Net official development assistance received (current	44,170,000.00	64,220,000.00	150,870,000.00	101,500,000.00	157,090,000.00	-
Net ODA received (% of gross capital formation)	9.91	-	-	-	-	-
Net ODA received (% of GNI)	2.53	3.09	6.20	3.71	-	-
Net official development assistance received (constant	54,000,000.00	76,560,000.00	163,570,000.00	101,500,000.00	162,690,000.00	-
Net ODA received (% of imports of goods and services	2.75	4.72	9.81	5.74	9.79	-
Net ODA received per capita (current US\$)	88.38	127.10	295.61	197.04	302.25	-
Net ODA received (% of central government expenditures	-	-	-	-	-	-
Debt service on external debt, total (TDS, current US\$)	-	-	-	-	-	-
Total debt service (% of exports of goods, services and	-	-	-	-	-	-
Total debt service (% of GNI)	-	-	-	-	-	-
Debt service (PPG and IMF only, % of exports, excluding	-	-	-	-	-	-
Debt service on external debt, public and publicly guaranteed	-	-	-	-	-	-

Public and publicly guaranteed debt service (% of GDP)	-	-	-	-	-	-
Public and publicly guaranteed debt service (% of exports)	-	-	-	-	-	-
Multilateral debt service (TDS, current US\$)	-	-	-	-	-	-
Multilateral debt service (% of public and publicly guaranteed debt service)	-	-	-	-	-	-
Agriculture value added per worker (constant 2000 LCU)	3,166.48	3,163.24	3,343.60	3,178.61	-	-
Water pollution, clay and glass industry (% of total BOD emissions)	-	-	-	-	-	-
Water pollution, chemical industry (% of total BOD emissions)	-	-	-	-	-	-
Water pollution, food industry (% of total BOD emissions)	-	-	-	-	-	-
Water pollution, metal industry (% of total BOD emissions)	-	-	-	-	-	-
Water pollution, other industry (% of total BOD emissions)	-	-	-	-	-	-
Water pollution, paper and pulp industry (% of total BOD emissions)	-	-	-	-	-	-
Organic water pollutant (BOD) emissions (kg per day)	-	-	-	-	-	-
Water pollution, textile industry (% of total BOD emissions)	-	-	-	-	-	-
Water pollution, wood industry (% of total BOD emissions)	-	-	-	-	-	-
Organic water pollutant (BOD) emissions (kg per day)	-	-	-	-	-	-
Energy production (kt of oil equivalent)	-	-	-	-	-	-
Electricity production from coal sources (kWh)	-	-	-	-	-	-
Electricity production from coal sources (% of total)	-	-	-	-	-	-
Electricity production from oil, gas and coal sources	-	-	-	-	-	-
Electricity production from hydroelectric sources (kWh)	-	-	-	-	-	-
Electricity production from hydroelectric sources (% of total)	-	-	-	-	-	-
Electric power transmission and distribution losses (% of total)	-	-	-	-	-	-
Electric power transmission and distribution losses (kt of oil equivalent)	-	-	-	-	-	-
Electricity production from natural gas sources (kWh)	-	-	-	-	-	-
Electricity production from natural gas sources (% of total)	-	-	-	-	-	-
Electricity production from nuclear sources (kWh)	-	-	-	-	-	-
Electricity production from nuclear sources (% of total)	-	-	-	-	-	-
Electricity production from oil sources (kWh)	-	-	-	-	-	-
Electricity production from oil sources (% of total)	-	-	-	-	-	-
Electricity production (kWh)	-	-	-	-	-	-
GDP per unit of energy use (PPP \$ per kg of oil equivalent)	-	-	-	-	-	-
GDP per unit of energy use (constant 2005 PPP \$ per kg of oil equivalent)	-	-	-	-	-	-
Energy imports, net (% of energy use)	-	-	-	-	-	-
Alternative and nuclear energy (% of total energy use)	-	-	-	-	-	-
Fossil fuel energy consumption (% of total)	-	-	-	-	-	-
Energy use (kg of oil equivalent) per \$1,000 GDP (constant 2005 PPP \$)	-	-	-	-	-	-
Energy use (kt of oil equivalent)	-	-	-	-	-	-
Combustible renewables and waste (metric tons of coal equivalent)	-	-	-	-	-	-
Combustible renewables and waste (% of total energy use)	-	-	-	-	-	-
Electric power consumption (kWh)	-	-	-	-	-	-
Electric power consumption (kWh per capita)	-	-	-	-	-	-
Energy use (kg of oil equivalent per capita)	-	-	-	-	-	-
CO2 intensity (kg per kg of oil equivalent energy use)	-	-	-	-	-	-
CO2 emissions (kg per 2000 US\$ of GDP)	2.04	1.99	1.90	-	-	-
CO2 emissions (kt)	2,377.94	2,436.56	2,436.56	-	-	-
CO2 emissions (metric tons per capita)	4.76	4.82	4.77	-	-	-
CO2 emissions (kg per PPP \$ of GDP)	0.78	0.74	0.68	-	-	-
CO2 emissions (kg per 2005 PPP \$ of GDP)	0.78	0.77	0.73	-	-	-
CO2 emissions from solid fuel consumption (% of total)	-	-	-	-	-	-
Other greenhouse gas emissions, HFC, PFC and SF6	-	-	-	-	-	-
HFC gas emissions (thousand metric tons of CO2 equivalent)	-	-	-	-	-	-
Agricultural methane emissions (thousand metric tons of CO2 equivalent)	-	-	-	-	-	-

Agricultural methane emissions (% of total)	-	-	-	-	-	-
Methane emissions in energy sector (thousand metr	-	-	-	-	-	-
Energy related methane emissions (% of total)	-	-	-	-	-	-
Methane emissions (kt of CO2 equivalent)	-	-	-	-	-	-
Agricultural nitrous oxide emissions (thousand metri	-	-	-	-	-	-
Agricultural nitrous oxide emissions (% of total)	-	-	-	-	-	-
Nitrous oxide emissions in energy sector (thousand	-	-	-	-	-	-
Nitrous oxide emissions in industrial and energy pro	-	-	-	-	-	-
Industrial nitrous oxide emissions (thousand metric t	-	-	-	-	-	-
Nitrous oxide emissions (thousand metric tons of CC	-	-	-	-	-	-
PFC gas emissions (thousand metric tons of CO2 ex	-	-	-	-	-	-
PM10, country level (micrograms per cubic meter)	26.99	26.34	25.61	23.75	-	-
SF6 gas emissions (thousand metric tons of CO2 ec	-	-	-	-	-	-
Bird species, threatened	-	-	-	-	-	-
Fish species, threatened	-	-	-	-	-	-
Plant species (higher), threatened	-	-	-	-	-	-
Mammal species, threatened	-	-	-	-	-	-
Population density (people per sq. km of land area)	3.20	3.24	3.27	3.30	3.33	-
Population in largest city	245,826.00	249,062.00	252,396.00	255,825.00	259,343.00	-
Population in the largest city (% of urban population)	66.56	66.39	66.31	66.29	66.30	-
Population in urban agglomerations of more than 1 r	-	-	-	-	-	-
Population in urban agglomerations of more than 1 r	-	-	-	-	-	-
Pump price for diesel fuel (US\$ per liter)	-	-	-	-	-	1.12
Pump price for gasoline (US\$ per liter)	-	-	-	-	-	1.14
GEF benefits index for biodiversity (0 = no biodiversi	3.05	-	-	2.68	-	-
Water productivity, total (constant 2000 US\$ GDP pr	-	-	-	-	-	-
Annual freshwater withdrawals, agriculture (% of tota	-	-	-	-	-	-
Annual freshwater withdrawals, domestic (% of total	-	-	-	-	-	-
Annual freshwater withdrawals, industry (% of total fi	-	-	-	-	-	-
Annual freshwater withdrawals, total (billion cubic m	-	-	-	-	-	-
Annual freshwater withdrawals, total (% of internal re	-	-	-	-	-	-
Renewable internal freshwater resources, total (billic	-	-	88.00	-	-	-
Renewable internal freshwater resources per capita	-	-	172,425.28	-	-	-
Terrestrial protected areas (% of total surface area)	11.44	11.44	11.44	11.44	11.44	-
Marine protected areas (% of total surface area)	22.88	22.88	22.88	22.88	22.88	-
Loan accounts, commercial banks (per 1,000 adults)	-	-	-	-	-	-
Loan accounts, cooperatives (per 1,000 adults)	-	-	-	-	-	-
Loan accounts, microfinance institutions (per 1,000	-	-	-	-	-	-
Loan accounts, specialized state financial institution:	-	-	-	-	-	-
Bank nonperforming loans to total gross loans (%)	-	-	-	-	-	-
Automated teller machines (ATMs) (per 100,000 adu	-	-	-	-	-	-
Branches, commercial banks (per 100,000 adults)	-	-	-	-	-	-
Branches, cooperatives (per 100,000 adults)	-	-	-	-	-	-
Branches, microfinance institutions (per 100,000 adu	-	-	-	-	-	-
Branches, specialized state financial institutions (per	-	-	-	-	-	-
Bank capital to assets ratio (%)	-	-	-	-	-	-
Deposit accounts, commercial banks (per 1,000 adu	-	-	-	-	-	-
Deposit accounts, cooperatives (per 1,000 adults)	-	-	-	-	-	-
Deposit accounts, microfinance institutions (per 1,00	-	-	-	-	-	-
Deposit accounts, specialized state financial instituti	-	-	-	-	-	-
Point-of-sale terminals (per 100,000 adults)	-	-	-	-	-	-
Bank liquid reserves to bank assets ratio (%)	0.15	0.17	0.17	0.16	0.20	-

Total reserves (includes gold, current US\$)	141,874,050.39	238,547,655.33	435,890,340.10	516,022,572.24	721,692,628.19	-
Total reserves (% of total external debt)	-	-	-	-	-	-
Total reserves in months of imports	1.06	2.10	3.40	3.50	5.39	-
Total reserves minus gold (current US\$)	125,776,569.40	215,350,282.05	400,935,753.00	473,572,446.99	658,967,372.19	-
Claims on central government (annual growth as % of GDP)	(0.05)	(1.92)	(6.90)	(5.75)	4.20	-
Claims on other sectors of the domestic economy (annual growth as % of GDP)	9.67	15.16	16.53	17.48	6.92	-
Net domestic credit (current LCU)	1,347,019,602.72	1,634,064,554.74	1,900,071,725.81	2,318,997,782.62	2,799,526,884.54	-
Net foreign assets (current LCU)	1,034,545,122.15	1,428,088,701.56	2,133,902,432.62	2,678,513,008.58	2,983,230,927.36	-
Claims on private sector (annual growth as % of broad money)	9.49	14.48	16.69	16.60	6.45	-
Broad money (current LCU)	2,166,551,841.73	2,764,434,687.67	3,570,720,567.23	4,324,401,289.06	4,973,192,472.44	-
Broad money (% of GDP)	42.44	42.18	47.61	47.41	-	-
Broad money to total reserves ratio	5.59	4.22	2.98	3.05	2.51	-
Broad money growth (annual %)	10.83	27.60	29.17	21.11	15.00	-
Money (current LCU)	1,250,425,962.92	1,520,581,372.41	1,912,686,930.70	2,422,055,161.65	2,656,323,959.88	-
Money and quasi money (M2) (current LCU)	2,166,551,841.73	2,764,434,687.67	3,570,720,567.23	4,324,401,289.06	4,973,192,472.44	-
Money and quasi money (M2) as % of GDP	42.44	42.18	47.61	47.41	-	-
Money and quasi money (M2) to total reserves ratio	5.59	4.22	2.98	3.05	2.51	-
Money and quasi money growth (annual %)	10.83	27.60	29.17	21.11	15.00	-
Quasi money (current LCU)	916,125,878.81	1,243,853,315.26	1,658,033,636.53	1,902,346,127.41	2,316,868,512.56	-
Consumer price index (2005 = 100)	100.00	111.28	118.43	135.80	135.65	-
Inflation, consumer prices (annual %)	9.90	11.28	6.43	14.67	(0.11)	-
Wholesale price index (2005 = 100)	-	-	-	-	-	-
Deposit interest rate (%)	7.27	6.63	6.42	6.34	6.38	-
Lending interest rate (%)	17.40	15.64	13.77	12.20	11.65	-
Interest rate spread (lending rate minus deposit rate)	10.13	9.02	7.35	5.86	5.28	-
Real interest rate (%)	2.55	0.87	5.13	(5.74)	-	-
Risk premium on lending (prime rate minus treasury bill rate)	-	-	-	-	-	-
Claims on central government, etc. (% GDP)	7.64	5.63	2.08	(0.80)	-	-
Claims on other sectors of the domestic economy (% of GDP)	20.11	22.32	26.48	28.66	-	-
Domestic credit provided by banking sector (% of GDP)	27.74	27.96	28.56	27.85	-	-
Domestic credit to private sector (% of GDP)	19.49	21.56	25.88	27.80	-	-
Liquid liabilities (M3) as % of GDP	-	-	-	-	-	-
Quasi-liquid liabilities (% of GDP)	-	-	-	-	-	-
Research and development expenditure (% of GDP)	-	-	-	-	-	-
Cash surplus/deficit (current LCU)	-	-	-	-	-	-
Cash surplus/deficit (% of GDP)	-	-	-	-	-	-
Central government debt, total (current LCU)	-	-	-	-	-	-
Central government debt, total (% of GDP)	-	-	-	-	-	-
Net incurrence of liabilities, domestic (current LCU)	-	-	-	-	-	-
Net incurrence of liabilities, domestic (% of GDP)	-	-	-	-	-	-
Net incurrence of liabilities, foreign (current LCU)	-	-	-	-	-	-
Net incurrence of liabilities, foreign (% of GDP)	-	-	-	-	-	-
Grants and other revenue (current LCU)	-	-	-	-	-	-
Grants and other revenue (% of revenue)	-	-	-	-	-	-
Social contributions (current LCU)	-	-	-	-	-	-
Social contributions (% of revenue)	-	-	-	-	-	-
Revenue, excluding grants (current LCU)	-	-	-	-	-	-
Revenue, excluding grants (% of GDP)	-	-	-	-	-	-
Taxes on exports (current LCU)	-	-	-	-	-	-
Taxes on exports (% of tax revenue)	-	-	-	-	-	-
Taxes on goods and services (current LCU)	-	-	-	-	-	-
Taxes on goods and services (% of revenue)	-	-	-	-	-	-

Taxes on goods and services (% value added of ind	-	-	-	-	-	-
Customs and other import duties (current LCU)	-	-	-	-	-	-
Customs and other import duties (% of tax revenue)	-	-	-	-	-	-
Taxes on international trade (current LCU)	-	-	-	-	-	-
Taxes on international trade (% of revenue)	-	-	-	-	-	-
Other taxes (current LCU)	-	-	-	-	-	-
Other taxes (% of revenue)	-	-	-	-	-	-
Tax revenue (current LCU)	-	-	-	-	-	-
Tax revenue (% of GDP)	-	-	-	-	-	-
Taxes on income, profits and capital gains (current L	-	-	-	-	-	-
Taxes on income, profits and capital gains (% of rev	-	-	-	-	-	-
Taxes on income, profits and capital gains (% of tot	-	-	-	-	-	-
Compensation of employees (current LCU)	-	-	-	-	-	-
Compensation of employees (% of expense)	-	-	-	-	-	-
Goods and services expense (current LCU)	-	-	-	-	-	-
Goods and services expense (% of expense)	-	-	-	-	-	-
Interest payments (current LCU)	-	-	-	-	-	-
Interest payments (% of revenue)	-	-	-	-	-	-
Interest payments (% of expense)	-	-	-	-	-	-
Other expense (current LCU)	-	-	-	-	-	-
Other expense (% of expense)	-	-	-	-	-	-
Expense (current LCU)	-	-	-	-	-	-
Expense (% of GDP)	-	-	-	-	-	-
Subsidies and other transfers (current LCU)	-	-	-	-	-	-
Subsidies and other transfers (% of expense)	-	-	-	-	-	-
Business extent of disclosure index (0=less disclosu	1.00	1.00	1.00	1.00	1.00	1.00
Ease of doing business index (1=most business-frie	-	-	-	-	160.00	161.00
New business density (new registrations per 1,000 p	0.53	0.37	0.35	0.54	0.44	-
New businesses registered (number)	160.00	114.00	109.00	169.00	142.00	-
Credit depth of information index (0=low to 6=high)	-	-	-	-	-	-
Private credit bureau coverage (% of adults)	-	-	-	-	-	-
Public credit registry coverage (% of adults)	-	-	-	-	-	-
Average time to clear exports through customs (day:	-	-	-	-	-	-
Delay in obtaining an electrical connection (days)	-	-	-	-	-	-
Power outages in firms in a typical month (number)	-	-	-	-	-	-
Firing cost (weeks of wages)	26.00	26.00	26.00	26.00	26.00	-
Cost to export (US\$ per container)	905.00	905.00	905.00	975.00	975.00	995.00
Documents to export (number)	8.00	8.00	8.00	8.00	8.00	8.00
Time to export (days)	25.00	25.00	25.00	25.00	25.00	25.00
Firms using banks to finance investment (% of firms	-	-	-	-	-	-
Informal payments to public officials (% of firms)	-	-	-	-	-	-
Losses due to theft, robbery, vandalism, and arson (	-	-	-	-	-	-
Time required to obtain an operating license (days)	-	-	-	-	-	-
Firms with female participation in ownership (% of fir	-	-	-	-	-	-
Firms formally registered when operations started (%)	-	-	-	-	-	-
Firms that do not report all sales for tax purposes (%)	-	-	-	-	-	-
ISO certification ownership (% of firms)	-	-	-	-	-	-
Value lost due to electrical outages (% of sales)	-	-	-	-	-	-
Firms offering formal training (% of firms)	-	-	-	-	-	-
Management time dealing with officials (% of manag	-	-	-	-	-	-
Cost to import (US\$ per container)	815.00	815.00	815.00	885.00	885.00	945.00
Documents to import (number)	7.00	7.00	7.00	7.00	7.00	7.00

Time to import (days)	25.00	25.00	25.00	25.00	25.00	25.00
Time to resolve insolvency (years)	5.00	5.00	5.00	5.00	5.00	5.00
Strength of legal rights index (0=weak to 10=strong)	5.00	5.00	5.00	5.00	5.00	5.00
Time required to enforce a contract (days)	1,715.00	1,715.00	1,715.00	1,715.00	1,715.00	1,715.00
Procedures to enforce a contract (number)	44.00	44.00	44.00	44.00	44.00	44.00
Time required to register property (days)	193.00	193.00	193.00	193.00	197.00	197.00
Procedures to register property (number)	4.00	4.00	4.00	4.00	6.00	6.00
Cost of business start-up procedures (% of GNI per	179.70	153.80	141.80	125.20	117.10	119.90
Time required to start a business (days)	694.00	694.00	694.00	694.00	694.00	694.00
Start-up procedures to register a business (number)	13.00	13.00	13.00	13.00	13.00	13.00
Time to prepare and pay taxes (hours)	199.00	199.00	199.00	199.00	199.00	199.00
Firms expected to give gifts in meetings with tax offi	-	-	-	-	-	-
Labor tax and contributions (% of commercial profits	-	-	-	-	-	-
Average number of times firms spent in meetings wi	-	-	-	-	-	-
Other taxes payable by businesses (% of commerci	-	-	-	-	-	-
Tax payments (number)	17.00	17.00	17.00	17.00	17.00	17.00
Profit tax (% of commercial profits)	-	-	-	-	-	27.90
Total tax rate (% of commercial profits)	27.90	27.90	27.90	27.90	27.90	27.90
Time required to build a warehouse (days)	431.00	431.00	431.00	431.00	431.00	431.00
Procedures to build a warehouse (number)	14.00	14.00	14.00	14.00	14.00	14.00
Investment in energy with private participation (curre	-	-	-	-	-	-
Investment in telecoms with private participation (cu	-	-	60,000,000.00	-	-	-
Investment in transport with private participation (cu	-	-	-	-	-	-
Investment in water and sanitation with private partic	-	-	-	-	-	-
Scientific and technical journal articles	3.00	1.90	1.80	-	-	-
Patent applications, nonresidents	-	-	-	-	-	-
Patent applications, residents	-	-	-	-	-	-
Trademark applications, aggregate direct	-	-	-	-	-	-
Trademark applications, Madrid	-	-	-	-	-	-
Trademark applications, direct nonresident	430.00	561.00	451.00	-	-	-
Trademark applications, direct resident	131.00	108.00	119.00	-	-	-
Trademark applications, total	561.00	669.00	570.00	-	-	-
CPIA business regulatory environment rating (1=low	-	-	-	-	-	-
CPIA debt policy rating (1=low to 6=high)	-	-	-	-	-	-
CPIA economic management cluster average (1=lov	-	-	-	-	-	-
CPIA policy and institutions for environmental sustai	-	-	-	-	-	-
CPIA quality of budgetary and financial managemen	-	-	-	-	-	-
CPIA financial sector rating (1=low to 6=high)	-	-	-	-	-	-
CPIA fiscal policy rating (1=low to 6=high)	-	-	-	-	-	-
CPIA gender equality rating (1=low to 6=high)	-	-	-	-	-	-
CPIA building human resources rating (1=low to 6=h	-	-	-	-	-	-
IDA resource allocation index (1=low to 6=high)	-	-	-	-	-	-
CPIA macroeconomic management rating (1=low to	-	-	-	-	-	-
CPIA quality of public administration rating (1=low to	-	-	-	-	-	-
CPIA equity of public resource use rating (1=low to €	-	-	-	-	-	-
CPIA property rights and rule-based governance rati	-	-	-	-	-	-
CPIA social protection rating (1=low to 6=high)	-	-	-	-	-	-
CPIA public sector management and institutions clu:	-	-	-	-	-	-
CPIA efficiency of revenue mobilization rating (1=lov	-	-	-	-	-	-
CPIA policies for social inclusion/equity cluster aver:	-	-	-	-	-	-
CPIA structural policies cluster average (1=low to 6=	-	-	-	-	-	-
CPIA trade rating (1=low to 6=high)	-	-	-	-	-	-

CPIA transparency, accountability, and corruption in	-	-	-	-	-	-
Burden of customs procedure, WEF (1=extremely in	-	-	2.24	2.48	2.85	-
Quality of port infrastructure, WEF (1=extremely unc	-	-	2.69	2.94	3.32	-
Air transport, registered carrier departures worldwide	4,851.00	4,908.00	5,022.00	4,900.00	4,560.00	-
Air transport, freight (million ton-km)	27.08	26.27	26.79	27.81	35.20	-
Air transport, passengers carried	315,410.00	306,504.00	324,821.00	329,788.00	303,117.00	-
Road sector diesel fuel consumption (kt of oil equiva	-	-	-	-	-	-
Road sector diesel fuel consumption per capita (kt o	-	-	-	-	-	-
Road density (km of road per 100 sq. km of land are	-	-	-	-	-	-
Road sector energy consumption (kt of oil equivalen	-	-	-	-	-	-
Road sector energy consumption per capita (kt of oil	-	-	-	-	-	-
Road sector energy consumption (% of total energy	-	-	-	-	-	-
Roads, goods transported (million ton-km)	-	-	-	-	-	-
Roads, paved (% of total roads)	-	-	-	-	-	-
Roads, passengers carried (million passenger-km)	-	-	-	-	-	-
Road sector gasoline fuel consumption (kt of oil equ	-	-	-	-	-	-
Road sector gasoline fuel consumption per capita (k	-	-	-	-	-	-
Roads, total network (km)	-	-	-	-	-	-
Railways, goods transported (million ton-km)	-	-	-	-	-	-
Railways, passengers carried (million passenger-km	-	-	-	-	-	-
Rail lines (total route-km)	-	-	-	-	-	-
Liner shipping connectivity index (maximum value in	4.16	3.90	4.29	4.26	4.16	4.12
Container port traffic (TEU: 20 foot equivalent units)	-	-	-	-	-	-
Motor vehicles (per 1,000 people)	-	-	-	-	-	-
Passenger cars (per 1,000 people)	-	-	-	-	-	-
Vehicles (per km of road)	-	-	-	-	-	-
Mobile cellular subscriptions	232,785.00	320,000.00	380,000.00	416,000.00	763,912.00	-
Mobile cellular subscriptions (per 100 people)	46.58	63.33	74.46	80.76	146.98	-
Telephone lines	81,056.00	81,500.00	82,000.00	83,000.00	83,747.00	-
Telephone lines (per 100 people)	16.22	16.13	16.07	16.11	16.11	-
Fixed broadband Internet subscribers	1,107.00	2,656.00	4,205.00	5,754.00	8,565.00	-
Fixed broadband Internet subscribers (per 100 peop	0.22	0.53	0.82	1.12	1.65	-
Secure Internet servers	5.00	7.00	5.00	4.00	10.00	11.00
Secure Internet servers (per 1 million people)	10.00	13.85	9.80	7.77	19.24	20.98
Internet users	32,000.00	48,000.00	72,000.00	108,500.00	163,000.00	-
Internet users (per 100 people)	6.40	9.50	14.11	21.06	31.36	-
Daily newspapers (per 1,000 people)	80.15	-	-	-	-	-
Lead time to export, median case (days)	-	-	-	-	-	-
Lead time to import, median case (days)	-	-	-	-	-	-
Logistics performance index: Efficiency of customs c	-	-	-	-	-	-
Logistics performance index: Quality of trade and tra	-	-	-	-	-	-
Logistics performance index: Ease of arranging com	-	-	-	-	-	-
Logistics performance index: Competence and quali	-	-	-	-	-	-
Logistics performance index: Overall (1=low to 5=high	-	-	-	-	-	-
Logistics performance index: Frequency with which s	-	-	-	-	-	-
Logistics performance index: Ability to track and trac	-	-	-	-	-	-
Arms imports (constant 1990 US\$)	-	-	-	-	-	-
Armed forces personnel, total	2,000.00	2,000.00	2,000.00	2,000.00	1,840.00	-
Armed forces personnel (% of total labor force)	1.12	1.10	1.08	1.06	0.95	-
Military expenditure (current LCU)	-	-	-	-	-	-
Military expenditure (% of GDP)	-	-	-	-	-	-
Military expenditure (% of central government expen	-	-	-	-	-	-

Arms exports (constant 1990 US\$)	-	-	-	-	-	-
General government final consumption expenditure (constant 2000 US\$)	418,714,170.61	-	-	-	-	-
General government final consumption expenditure (current LCU)	1,143,787,542.72	-	-	-	-	-
General government final consumption expenditure (constant 2000 LCU)	-	-	-	-	-	-
General government final consumption expenditure (annual % growth)	-	-	-	-	-	-
General government final consumption expenditure (constant 2000 LCU) (% of GDP)	-	-	-	-	-	-
General government final consumption expenditure (current US\$)	23.56	-	-	-	-	-
Household final consumption expenditure, etc. (current US\$)	1,177,283,260.99	-	-	-	-	-
Household final consumption expenditure, etc. (current LCU)	3,215,945,441.26	-	-	-	-	-
Household final consumption expenditure, etc. (constant 2000 US\$)	-	-	-	-	-	-
Household final consumption expenditure, etc. (annual % growth)	-	-	-	-	-	-
Household final consumption expenditure, etc. (constant 2000 LCU)	-	-	-	-	-	-
Household final consumption expenditure, etc. (% of GDP)	66.23	-	-	-	-	-
Household final consumption expenditure (current US\$)	1,177,283,260.99	-	-	-	-	-
Household final consumption expenditure (current LCU)	3,215,945,441.26	-	-	-	-	-
Household final consumption expenditure (constant 2000 US\$)	-	-	-	-	-	-
Household final consumption expenditure (annual % growth)	-	-	-	-	-	-
Household final consumption expenditure (constant 2000 LCU)	-	-	-	-	-	-
Household final consumption expenditure per capita (current US\$)	-	-	-	-	-	-
Household final consumption expenditure per capita (current LCU)	-	-	-	-	-	-
Household final consumption expenditure, PPP (current US\$)	1,753,103,384.30	-	-	-	-	-
Household final consumption expenditure, PPP (constant 2000 US\$)	1,753,103,384.30	-	-	-	-	-
Final consumption expenditure, etc. (current US\$)	1,595,997,431.60	-	-	-	-	-
Final consumption expenditure, etc. (current LCU)	4,359,732,983.98	-	-	-	-	-
Final consumption expenditure, etc. (constant 2000 US\$)	-	-	-	-	-	-
Final consumption expenditure, etc. (annual % growth)	-	-	-	-	-	-
Final consumption expenditure, etc. (constant 2000 LCU)	-	-	-	-	-	-
Final consumption expenditure, etc. (% of GDP)	89.79	-	-	-	-	-
Final consumption expenditure (current US\$)	1,161,128,189.59	-	-	-	-	-
Final consumption expenditure (current LCU)	3,171,815,171.24	-	-	-	-	-
Final consumption expenditure (constant 2000 US\$)	-	-	-	-	-	-
Final consumption expenditure (constant 2000 LCU)	-	-	-	-	-	-
Gross national expenditure deflator (base year varies)	-	-	-	-	-	-
Gross national expenditure (current US\$)	2,041,832,269.86	-	-	-	-	-
Gross national expenditure (current LCU)	5,577,605,150.49	-	-	-	-	-
Gross national expenditure (constant 2000 US\$)	-	-	-	-	-	-
Gross national expenditure (constant 2000 LCU)	-	-	-	-	-	-
Gross national expenditure (% of GDP)	114.87	-	-	-	-	-
Exports of goods and services (current US\$)	545,706,923.87	-	-	-	-	-
Exports of goods and services (current LCU)	1,490,689,413.71	-	-	-	-	-
Exports of goods and services (constant 2000 US\$)	-	-	-	-	-	-
Exports of goods and services (annual % growth)	-	-	-	-	-	-
Exports of goods and services (constant 2000 LCU)	-	-	-	-	-	-
Exports of goods and services (% of GDP)	30.70	-	-	-	-	-
Gross fixed capital formation, private sector (current US\$)	960,439,384.70	-	-	-	-	-
Gross fixed capital formation, private sector (% of GDP)	19.78	-	-	-	-	-
Gross fixed capital formation (current US\$)	445,834,838.26	-	-	-	-	-
Gross fixed capital formation (current LCU)	1,217,872,166.51	-	-	-	-	-
Gross fixed capital formation (constant 2000 US\$)	-	-	-	-	-	-
Gross fixed capital formation (annual % growth)	-	-	-	-	-	-
Gross fixed capital formation (constant 2000 LCU)	-	-	-	-	-	-
Gross fixed capital formation (% of GDP)	25.08	-	-	-	-	-

Changes in inventories (current US\$)	-	-	-	-	-	-
Changes in inventories (current LCU)	-	-	-	-	-	-
Changes in inventories (constant LCU)	-	-	-	-	-	-
Gross capital formation (current US\$)	445,834,838.26	-	-	-	-	-
Gross capital formation (current LCU)	1,217,872,166.51	-	-	-	-	-
Gross capital formation (constant 2000 US\$)	-	-	-	-	-	-
Gross capital formation (annual % growth)	-	-	-	-	-	-
Gross capital formation (constant LCU)	-	-	-	-	-	-
Gross capital formation (% of GDP)	25.08	-	-	-	-	-
Imports of goods and services (current US\$)	810,008,626.31	-	-	-	-	-
Imports of goods and services (current LCU)	2,212,673,564.21	-	-	-	-	-
Imports of goods and services (constant 2000 US\$)	-	-	-	-	-	-
Imports of goods and services (annual % growth)	-	-	-	-	-	-
Imports of goods and services (constant LCU)	-	-	-	-	-	-
Imports of goods and services (% of GDP)	45.57	-	-	-	-	-
External balance on goods and services (current US\$)	(264,301,702.44)	-	-	-	-	-
External balance on goods and services (current LCU)	(721,984,150.49)	-	-	-	-	-
External balance on goods and services (constant 2000 US\$)	-	-	-	-	-	-
External balance on goods and services (% of GDP)	(14.87)	-	-	-	-	-
Trade (% of GDP)	76.27	-	-	-	-	-
Agriculture, value added (current US\$)	92,534,350.21	98,945,887.93	108,839,344.26	133,811,912.57	-	-
Agriculture, value added (current LCU)	252,773,000.00	271,482,780.00	298,764,000.00	367,313,700.00	-	-
Agriculture, value added (constant 2000 US\$)	101,327,402.39	101,223,704.76	106,995,218.79	101,715,527.82	-	-
Agriculture, value added (annual % growth)	(0.29)	(0.10)	5.70	(4.93)	-	-
Agriculture, value added (constant LCU)	342,000.00	341,650.00	361,130.00	343,310.00	-	-
Agriculture, value added (% of GDP)	5.53	4.98	4.79	4.71	-	-
Manufacturing, value added (current US\$)	318,762,538.13	377,155,741.27	443,225,898.86	586,846,630.24	-	-
Manufacturing, value added (current LCU)	870,753,000.00	1,034,821,065.10	1,216,655,092.38	1,610,894,000.00	-	-
Manufacturing, value added (constant 2000 US\$)	135,246,501.36	147,426,298.86	144,127,603.70	140,308,729.69	-	-
Manufacturing, value added (annual % growth)	3.09	9.01	(2.24)	(2.65)	-	-
Manufacturing, value added (constant LCU)	533,000.00	581,000.00	568,000.00	552,950.00	-	-
Manufacturing, value added (% of GDP)	19.06	18.97	19.50	20.66	-	-
Industry, value added (current US\$)	640,613,666.87	749,097,300.94	887,615,426.27	1,140,714,754.10	-	-
Industry, value added (current LCU)	1,749,943,000.00	2,055,335,719.45	2,436,504,345.12	3,131,262,000.00	-	-
Industry, value added (constant 2000 US\$)	332,787,444.44	360,573,038.39	386,464,967.70	395,473,836.05	-	-
Industry, value added (annual % growth)	6.59	8.35	7.18	2.33	-	-
Industry, value added (constant LCU)	1,311,000.00	1,420,460.00	1,522,460.00	1,557,950.00	-	-
Industry, value added (% of GDP)	38.30	37.67	39.06	40.16	-	-
Chemicals (% of value added in manufacturing)	-	-	-	-	-	-
Food, beverages and tobacco (% of value added in manufacturing)	-	-	-	-	-	-
Machinery and transport equipment (% of value added in manufacturing)	-	-	-	-	-	-
Other manufacturing (% of value added in manufacturing)	-	-	-	-	-	-
Textiles and clothing (% of value added in manufacturing)	-	-	-	-	-	-
Services, etc., value added (current US\$)	939,313,727.88	1,140,405,301.52	1,276,066,994.54	1,565,944,826.96	-	-
Services, etc., value added (current LCU)	2,565,892,000.00	3,128,987,046.04	3,502,803,900.00	4,298,518,550.00	-	-
Services, etc., value added (constant 2000 US\$)	703,496,234.32	713,896,153.22	743,543,416.44	796,239,527.39	-	-
Services, etc., value added (annual % growth)	5.63	1.48	4.15	7.09	-	-
Services, etc., value added (constant LCU)	3,736,000.00	3,791,230.00	3,948,675.30	4,228,524.23	-	-
Services, etc., value added (% of GDP)	56.16	57.35	56.15	55.13	-	-
Adjusted savings: education expenditure (current US\$)	-	-	-	-	-	-
Adjusted savings: education expenditure (% of GNI)	-	-	-	-	-	-
Adjusted savings: carbon dioxide damage (current US\$)	15,907,770.80	16,830,839.42	17,312,828.95	18,561,815.15	-	-

Adjusted savings: carbon dioxide damage (% of GNI)	0.91	0.81	0.71	0.68	-	-
Adjusted savings: net forest depletion (current US\$)	-	-	-	-	-	-
Adjusted savings: net forest depletion (% of GNI)	-	-	-	-	-	-
Adjusted savings: consumption of fixed capital (current US\$)	182,145,101.83	223,824,826.77	259,043,442.85	334,168,087.84	-	-
Adjusted savings: consumption of fixed capital (% of GNI)	10.46	10.77	10.66	12.22	-	-
Adjusted savings: mineral depletion (current US\$)	41,966,575.64	78,533,566.83	103,018,398.56	124,108,076.79	-	-
Adjusted savings: mineral depletion (% of GNI)	2.41	3.77	4.23	4.53	-	-
Adjusted savings: energy depletion (current US\$)	-	-	-	-	-	-
Adjusted savings: energy depletion (% of GNI)	-	-	-	-	-	-
Adjusted savings: particulate emission damage (current US\$)	3,959,214.82	4,613,758.41	4,308,366.03	4,211,044.84	4,211,044.84	-
Adjusted savings: particulate emission damage (% of GNI)	0.23	0.22	0.18	0.15	0.15	-
Adjusted savings: natural resources depletion (% of GNI)	2.41	3.77	4.23	4.53	-	-
Adjusted savings: gross savings (% of GNI)	9.72	-	-	-	-	-
Adjusted savings: net national savings (current US\$)	(12,679,751.24)	-	-	-	-	-
Adjusted savings: net national savings (% of GNI)	(0.74)	-	-	-	-	-
Adjusted net national income (current US\$)	1,519,251,104.71	1,779,113,314.83	2,071,658,377.17	2,280,054,025.53	-	-
Adjusted net national income (constant 2000 US\$)	-	-	-	-	-	-
Adjusted net national income (annual % growth)	-	-	-	-	-	-
Adjusted net savings, including particulate emission damage	-	-	-	-	-	-
Adjusted net savings, including particulate emission damage (constant 2000 US\$)	-	-	-	-	-	-
Adjusted net savings, excluding particulate emission damage	-	-	-	-	-	-
Adjusted net savings, excluding particulate emission damage (constant 2000 US\$)	-	-	-	-	-	-
Exports as a capacity to import (constant LCU)	-	-	-	-	-	-
Coal rents (% of GDP)	-	-	-	-	-	-
Inflation, GDP deflator (annual %)	14.48	14.64	8.21	19.03	-	-
GDP deflator (base year varies by country)	89,627.96	102,750.56	111,187.34	132,349.04	-	-
Discrepancy in expenditure estimate of GDP (current US\$)	1,187,917,812.74	-	-	-	-	-
Discrepancy in expenditure estimate of GDP (constant 2000 US\$)	-	-	-	-	-	-
Gross value added at factor cost (current US\$)	1,672,461,744.97	1,988,448,490.38	2,272,521,765.07	2,840,471,493.62	-	-
Gross value added at factor cost (current LCU)	4,568,608,000.00	5,455,805,545.49	6,238,072,245.12	7,797,094,250.00	-	-
Gross value added at factor cost (constant 2000 US\$)	1,134,640,553.19	1,169,241,931.64	1,227,968,960.08	1,290,610,831.80	-	-
Gross value added at factor cost (constant LCU)	5,389,000.00	5,553,340.00	5,832,265.30	6,129,784.23	-	-
Forest rents (% of GDP)	0.33	0.29	0.25	0.23	-	-
Mineral rents (% of GDP)	3.78	5.90	6.80	6.33	-	-
GDP (current US\$)	1,777,530,567.42	2,130,262,442.34	2,423,523,222.27	3,033,096,755.72	-	-
GDP (current LCU)	4,855,621,000.00	5,844,907,576.18	6,652,571,245.12	8,325,850,594.44	-	-
GDP (constant 2000 US\$)	1,163,535,456.71	1,221,720,373.95	1,285,027,892.79	1,351,095,873.16	-	-
GDP growth (annual %)	3.92	5.00	5.18	5.14	-	-
GDP (constant LCU)	5,417,529.19	5,688,443.57	5,983,209.26	6,290,827.91	-	-
GDP, PPP (current international \$)	3,032,217,957.05	3,287,405,752.08	3,576,240,052.04	3,842,308,301.32	-	-
GDP, PPP (constant 2005 international \$)	3,032,217,957.05	3,183,850,079.54	3,348,831,897.93	3,521,007,584.83	-	-
Natural gas rents (% of GDP)	-	-	-	-	-	-
GDP per capita (current US\$)	3,556.78	4,215.98	4,748.60	5,888.09	-	-
GDP per capita (constant 2000 US\$)	2,328.19	2,417.89	2,517.86	2,622.86	-	-
GDP per capita growth (annual %)	2.67	3.85	4.13	4.17	-	-
GDP per capita (constant LCU)	10.84	11.26	11.72	12.21	-	-
GDP per capita, PPP (current international \$)	6,067.36	6,506.07	7,007.21	7,459.00	-	-
GDP per capita, PPP (constant 2005 international \$)	6,067.36	6,301.12	6,561.63	6,835.26	-	-
Oil rents (% of GDP)	-	-	-	-	-	-
Total natural resources rents (% of GDP)	4.11	6.19	7.05	6.56	-	-
Gross domestic savings (current US\$)	181,533,135.82	-	-	-	-	-
Gross domestic savings (current LCU)	495,888,016.02	-	-	-	-	-

Gross domestic savings (constant LCU)	-	-	-	-	-	-
Gross domestic savings (% of GDP)	10.21	-	-	-	-	-
Gross domestic income (constant 2000 US\$)	-	-	-	-	-	-
Gross domestic income (constant LCU)	-	-	-	-	-	-
GNI, Atlas method (current US\$)	1,652,468,344.08	1,901,206,753.36	2,278,246,001.88	2,454,478,481.44	-	-
GNI (current US\$)	1,743,362,782.18	2,081,471,708.43	2,433,720,218.58	2,738,330,190.16	-	-
GNI (current LCU)	4,762,286,000.00	5,711,038,000.00	6,680,562,000.00	7,516,716,372.00	-	-
GNI (constant 2000 US\$)	-	-	-	-	-	-
GNI growth (annual %)	-	-	-	-	-	-
GNI (constant LCU)	-	-	-	-	-	-
GNI, PPP (current international \$)	2,973,932,505.40	3,212,112,240.75	3,591,287,115.04	3,468,899,830.37	-	-
GNI per capita, Atlas method (current US\$)	3,310.00	3,760.00	4,460.00	4,760.00	-	-
GNI per capita (constant 2000 US\$)	-	-	-	-	-	-
GNI per capita growth (annual %)	-	-	-	-	-	-
GNI per capita (constant LCU)	-	-	-	-	-	-
GNI per capita, PPP (current international \$)	5,950.00	6,360.00	7,040.00	6,730.00	-	-
Gross savings (current US\$)	169,465,350.59	-	-	-	-	-
Gross savings (current LCU)	462,922,849.35	-	-	-	-	-
Gross savings (% of GNI)	9.72	-	-	-	-	-
Gross savings (% of GDP)	9.53	-	-	-	-	-
Gross national income (constant LCU)	-	-	-	-	-	-
Net income from abroad (current US\$)	(40,400,000.00)	(33,321,913.44)	8,358,105.65	(143,000,000.00)	-	-
Net income from abroad (current LCU)	(110,359,333.33)	(91,427,000.00)	22,943,000.00	(392,535,000.00)	-	-
Net income from abroad (constant LCU)	-	-	-	-	-	-
Net taxes on products (current US\$)	105,068,822.45	141,813,951.96	151,001,457.19	192,625,262.09	-	-
Net taxes on products (current LCU)	287,013,000.00	389,102,030.69	414,499,000.00	528,756,344.44	-	-
Net taxes on products (constant LCU)	28,529.19	135,103.57	150,943.96	161,043.68	-	-
Net current transfers from abroad (current US\$)	111,000,000.00	35,900,000.00	-	-	-	-
Net current transfers from abroad (current LCU)	303,215,000.00	98,500,625.00	-	-	-	-
Net current transfers from abroad (constant LCU)	-	-	-	-	-	-
Terms of trade adjustment (constant LCU)	-	-	-	-	-	-
DEC alternative conversion factor (LCU per US\$)	2.73	2.74	2.75	2.75	2.75	-
Official exchange rate (LCU per US\$, period average)	2.73	2.74	2.75	2.75	2.75	2.75
PPP conversion factor, GDP (LCU per international \$)	1.60	1.78	1.86	2.17	-	-
PPP conversion factor (GDP) to market exchange rate	0.59	0.65	0.68	0.79	-	-
PPP conversion factor, private consumption (LCU per international \$)	1.83	1.98	2.05	2.26	2.27	-
Real effective exchange rate index (2005 = 100)	-	-	-	-	-	-
Literacy rate, youth female (% of females ages 15-24)	-	-	-	99.46	-	-
Ratio of young literate females to males (% ages 15-24)	-	-	-	100.08	-	-
Literacy rate, youth male (% of males ages 15-24)	-	-	-	99.38	-	-
Literacy rate, youth total (% of people ages 15-24)	-	-	-	99.42	-	-
Literacy rate, adult female (% of females ages 15 and over)	-	-	-	93.77	-	-
Literacy rate, adult male (% of males ages 15 and over)	-	-	-	95.49	-	-
Literacy rate, adult total (% of people ages 15 and over)	-	-	-	94.62	-	-
Ratio of female to male primary enrollment (%)	96.21	96.12	94.17	95.42	-	-
Ratio of girls to boys in primary and secondary education	108.52	109.32	108.70	107.41	-	-
Ratio of female to male secondary enrollment (%)	129.19	131.54	132.78	127.61	-	-
Ratio of female to male tertiary enrollment (%)	-	-	-	-	-	-
School enrollment, preprimary (% gross)	79.84	74.74	75.02	81.29	-	-
School enrollment, preprimary, female (% gross)	78.94	70.44	75.07	81.43	-	-
School enrollment, preprimary, male (% gross)	80.72	78.94	74.98	81.15	-	-
Primary school starting age (years)	6.00	6.00	6.00	6.00	6.00	-

Primary completion rate, female (% of relevant age group)	90.36	100.00	82.69	95.46	-	-
Primary completion rate, male (% of relevant age group)	75.92	83.61	73.45	81.29	-	-
Primary completion rate, total (% of relevant age group)	83.03	91.68	78.00	88.27	-	-
Primary education, duration (years)	6.00	6.00	6.00	6.00	6.00	-
Primary education, pupils	65,527.00	66,121.00	65,020.00	69,604.00	-	-
Primary education, pupils (% female)	48.32	48.34	47.87	48.25	-	-
Pupil-teacher ratio, primary	18.62	15.99	13.23	15.99	-	-
School enrollment, primary (% gross)	112.49	111.51	107.89	113.81	-	-
School enrollment, primary, female (% gross)	110.28	109.28	104.61	111.11	-	-
School enrollment, primary, male (% gross)	114.63	113.68	111.09	116.44	-	-
Gross intake rate in grade 1, female (% of relevant age group)	92.86	98.88	91.23	97.21	-	-
Gross intake rate in grade 1, male (% of relevant age group)	95.75	106.13	98.73	97.91	-	-
Gross intake rate in grade 1, total (% of relevant age group)	94.33	102.55	95.02	97.56	-	-
School enrollment, primary (% net)	88.42	89.05	85.56	90.12	-	-
School enrollment, primary, female (% net)	88.05	88.59	84.51	89.58	-	-
School enrollment, primary, male (% net)	88.79	89.51	86.59	90.65	-	-
Net intake rate in grade 1, female (% of official school-age population)	61.60	76.43	76.96	86.24	-	-
Net intake rate in grade 1, male (% of official school-age population)	54.19	79.72	80.32	85.89	-	-
Net intake rate in grade 1 (% of official school-age population)	57.84	78.10	78.66	86.06	-	-
School enrollment, primary, private (% of total primary enrollment)	46.61	46.87	45.62	45.88	-	-
Persistence to grade 5, female (% of cohort)	85.16	81.19	-	-	-	-
Persistence to grade 5, male (% of cohort)	77.14	78.53	-	-	-	-
Persistence to grade 5, total (% of cohort)	80.94	79.81	-	-	-	-
Persistence to last grade of primary, female (% of cohort)	-	72.07	-	-	-	-
Persistence to last grade of primary, male (% of cohort)	-	63.68	-	-	-	-
Persistence to last grade of primary, total (% of cohort)	-	67.78	-	-	-	-
Repeaters, primary, female (% of female enrollment)	18.08	12.06	13.48	14.37	-	-
Repeaters, primary, male (% of male enrollment)	22.30	15.79	17.81	19.86	-	-
Repeaters, primary, total (% of total enrollment)	20.26	13.98	15.73	17.21	-	-
Trained teachers in primary education, female (% of total teachers)	-	-	-	100.00	-	-
Trained teachers in primary education, male (% of total teachers)	-	-	-	100.00	-	-
Trained teachers in primary education (% of total teachers)	-	-	-	100.00	-	-
Primary education, teachers	3,520.00	4,136.00	4,913.00	4,354.00	-	-
Primary education, teachers (% female)	92.02	90.93	91.92	93.06	-	-
Total enrollment, primary (% net)	89.80	89.07	85.58	90.14	-	-
Total enrollment, primary, female (% net)	90.01	88.62	84.54	89.61	-	-
Total enrollment, primary, male (% net)	89.60	89.51	86.59	90.66	-	-
Children out of school, primary	5,940.00	6,481.00	8,691.00	6,031.00	-	-
Children out of school, primary, female	2,867.00	3,329.00	4,601.00	3,141.00	-	-
Children out of school, primary, male	3,073.00	3,152.00	4,090.00	2,890.00	-	-
Secondary school starting age (years)	12.00	12.00	12.00	12.00	12.00	-
Secondary education, duration (years)	7.00	7.00	7.00	7.00	6.00	-
Secondary education, pupils	45,818.00	-	-	-	-	-
Secondary education, pupils (% female)	55.77	56.30	56.55	55.53	-	-
Secondary education, general pupils	24,307.00	26,424.00	24,523.00	25,583.00	-	-
Secondary education, general pupils (% female)	60.62	60.44	62.03	61.20	-	-
Pupil-teacher ratio, secondary	13.90	14.08	14.00	-	-	-
Secondary education, vocational pupils	21,511.00	20,301.00	22,712.00	22,551.00	-	-
Secondary education, vocational pupils (% female)	50.30	50.92	50.63	49.10	-	-
School enrollment, secondary (% gross)	70.70	72.65	73.78	75.37	-	-
School enrollment, secondary, female (% gross)	79.83	82.66	84.29	84.62	-	-
School enrollment, secondary, male (% gross)	61.79	62.84	63.48	66.31	-	-

School enrollment, secondary (% net)	64.57	-	-	-	-	-
School enrollment, secondary, female (% net)	74.08	-	-	-	-	-
School enrollment, secondary, male (% net)	55.28	-	-	-	-	-
School enrollment, secondary, private (% of total ser	20.42	19.83	18.34	18.65	-	-
Progression to secondary school, female (%)	-	49.73	58.75	-	-	-
Progression to secondary school, male (%)	-	41.19	46.33	-	-	-
Progression to secondary school (%)	-	45.78	52.84	-	-	-
Repeaters, secondary, female (% of female enrollme	-	-	-	-	-	-
Repeaters, secondary, male (% of male enrollment)	-	-	-	-	-	-
Repeaters, secondary, total (% of total enrollment)	-	-	-	-	-	-
Secondary education, teachers	3,296.00	3,319.00	3,373.00	-	-	-
Secondary education, teachers, female	2,052.00	1,964.00	2,015.00	-	-	-
Secondary education, teachers (% female)	62.26	59.17	59.74	-	-	-
School enrollment, tertiary (% gross)	-	-	-	-	-	-
School enrollment, tertiary, female (% gross)	-	-	-	-	-	-
School enrollment, tertiary, male (% gross)	-	-	-	-	-	-
Expenditure per student, primary (% of GDP per cap	-	-	-	-	-	-
Expenditure per student, secondary (% of GDP per c	-	-	-	-	-	-
Expenditure per student, tertiary (% of GDP per capi	-	-	-	-	-	-
Public spending on education, total (% of governmen	-	-	-	-	-	-
Public spending on education, total (% of GDP)	-	-	-	-	-	-
Proportion of seats held by women in national parlia	19.60	25.50	25.50	25.50	25.50	9.80
Condom use, population ages 15-24, female (% of fi	-	-	-	-	-	-
Condom use, population ages 15-24, male (% of ma	-	-	-	-	-	-
Female adults with HIV (% of population ages 15+ w	-	-	-	-	30.56	-
Prevalence of HIV, total (% of population ages 15-4	1.10	1.00	1.00	1.00	1.00	-
Mortality rate, female child (per 1,000 female childre	-	-	-	-	-	-
Mortality rate, male child (per 1,000 male children a	-	-	-	-	-	-
Mortality rate, under-5 (per 1,000)	31.00	29.70	28.50	27.40	26.30	-
Improved water source, rural (% of rural population v	78.00	-	-	81.00	-	-
Improved water source, urban (% of urban populatio	97.00	-	-	97.00	-	-
Improved water source (% of population with access	92.00	-	-	93.00	-	-
Children (0-14) living with HIV	-	-	-	-	-	-
Prevalence of HIV, female (% ages 15-24)	-	-	-	-	0.40	-
Prevalence of HIV, male (% ages 15-24)	-	-	-	-	0.60	-
Immunization, DPT (% of children ages 12-23 month	83.00	84.00	84.00	85.00	87.00	-
Immunization, measles (% of children ages 12-23 m	91.00	83.00	85.00	86.00	88.00	-
Hospital beds (per 1,000 people)	-	3.30	3.10	-	-	-
Community health workers (per 1,000 people)	-	-	-	-	-	-
Nurses and midwives (per 1,000 people)	-	-	-	-	-	-
Physicians (per 1,000 people)	-	-	-	-	-	-
Use of insecticide-treated bed nets (% of under-5 po	-	-	-	-	-	-
Children with fever receiving antimalarial drugs (% o	-	-	-	-	-	-
Lifetime risk of maternal death (1 in: rate varies by c	380.00	-	-	400.00	-	-
Lifetime risk of maternal death (%)	0.26	-	-	0.25	-	-
Smoking prevalence, females (% of adults)	-	3.00	-	-	-	-
Smoking prevalence, males (% of adults)	-	17.00	-	-	-	-
Improved sanitation facilities (% of population with a	84.00	-	-	84.00	-	-
Improved sanitation facilities, rural (% of rural popul	66.00	-	-	66.00	-	-
Improved sanitation facilities, urban (% of urban pop	90.00	-	-	90.00	-	-
Pregnant women receiving prenatal care (%)	-	89.90	-	-	-	-
ARI treatment (% of children under 5 taken to a heal	-	73.60	-	-	-	-

Exclusive breastfeeding (% of children under 6 months)	-	2.00	-	-	-	-
Births attended by skilled health staff (% of total)	-	89.80	-	-	-	-
Low-birthweight babies (% of births)	-	10.90	-	-	-	-
Malnutrition prevalence, weight for age (% of children under 5)	-	7.50	-	-	-	-
Maternal mortality ratio (modeled estimate, per 100,000 live births)	100.00	-	-	100.00	-	-
Maternal mortality ratio (national estimate, per 100,000 live births)	-	-	184.30	-	-	-
Diarrhea treatment (% of children under 5 receiving treatment)	-	27.70	-	-	-	-
Prevalence of overweight (% of children under 5)	-	4.00	-	-	-	-
Malnutrition prevalence, height for age (% of children under 5)	-	10.70	-	-	-	-
Prevalence of wasting (% of children under 5)	-	4.90	-	-	-	-
Tuberculosis treatment success rate (% of registered patients)	-	-	-	59.00	-	-
Tuberculosis case detection rate (% of all forms)	23.00	23.00	-	17.00	25.00	-
Incidence of tuberculosis (per 100,000 people)	100.00	108.00	116.00	125.00	135.00	-
Newborns protected against tetanus (%)	-	-	93.00	93.00	-	-
Outpatient visits per capita	-	-	-	-	-	-
External resources for health (% of total expenditure)	6.48	8.28	1.90	2.84	3.27	-
Out-of-pocket health expenditure (% of total expenditure)	14.76	11.54	12.05	12.31	12.25	-
Out-of-pocket health expenditure (% of private expenditure)	30.25	23.60	23.69	23.90	24.02	-
Health expenditure per capita (current US\$)	243.19	323.16	348.60	422.95	429.13	-
Health expenditure per capita, PPP (constant 2005 US\$)	414.85	498.70	511.57	532.46	547.64	-
Health expenditure, private (% of GDP)	3.34	3.75	3.73	3.70	3.87	-
Health expenditure, public (% of total health expenditure)	51.20	51.11	49.14	48.49	49.00	-
Health expenditure, public (% of government expenditure)	11.65	13.79	13.28	13.57	14.50	-
Health expenditure, public (% of GDP)	3.50	3.92	3.61	3.48	3.72	-
Health expenditure, total (% of GDP)	6.84	7.67	7.34	7.18	7.60	-
Income share held by second 20%	-	-	-	-	-	-
Income share held by third 20%	-	-	-	-	-	-
Income share held by fourth 20%	-	-	-	-	-	-
Income share held by highest 20%	-	-	-	-	-	-
Income share held by highest 10%	-	-	-	-	-	-
Income share held by lowest 10%	-	-	-	-	-	-
Income share held by lowest 20%	-	-	-	-	-	-
Poverty headcount ratio at \$2 a day (PPP) (% of population)	-	-	-	-	-	-
Poverty headcount ratio at \$1.25 a day (PPP) (% of population)	-	-	-	-	-	-
Poverty gap at \$2 a day (PPP) (%)	-	-	-	-	-	-
Poverty gap at \$1.25 a day (PPP) (%)	-	-	-	-	-	-
GINI index	-	-	-	-	-	-
Poverty gap at national poverty line (%)	-	-	-	-	-	-
Poverty headcount ratio at national poverty line (% of population)	-	-	-	-	-	-
Poverty gap at rural poverty line (%)	-	-	-	-	-	-
Poverty headcount ratio at rural poverty line (% of population)	-	-	-	-	-	-
Poverty gap at urban poverty line (%)	-	-	-	-	-	-
Poverty headcount ratio at urban poverty line (% of population)	-	-	-	-	-	-
Child employment in agriculture, female (% of female employment)	-	-	-	-	-	-
Child employment in agriculture, male (% of male employment)	-	-	-	-	-	-
Child employment in agriculture (% of economically active population)	-	-	-	-	-	-
Employees, agriculture, female (% of female employment)	-	-	-	-	-	-
Employees, agriculture, male (% of male employment)	-	-	-	-	-	-
Employment in agriculture (% of total employment)	-	-	-	-	-	-
Employment to population ratio, ages 15-24, female	10.60	10.80	10.70	10.90	-	-
Employment to population ratio, ages 15-24, male	31.60	31.40	32.00	32.20	-	-
Employment to population ratio, ages 15-24, total	21.20	21.30	21.50	21.70	-	-

Share of women employed in the nonagricultural sector	-	-	-	-	-	-
Employers, female (% of employment)	-	-	-	-	-	-
Employers, male (% of employment)	-	-	-	-	-	-
Employers, total (% of employment)	-	-	-	-	-	-
Self-employed, female (% of females employed)	-	-	-	-	-	-
Self-employed, male (% of males employed)	-	-	-	-	-	-
Self-employed, total (% of total employed)	-	-	-	-	-	-
Employment to population ratio, 15+, female (%)	32.10	33.10	32.10	32.40	-	-
Employment to population ratio, 15+, male (%)	60.20	60.10	60.40	60.80	-	-
Employment to population ratio, 15+, total (%)	46.10	46.60	46.20	46.50	-	-
Vulnerable employment, female (% of female employment)	-	-	-	-	-	-
Vulnerable employment, male (% of male employment)	-	-	-	-	-	-
Vulnerable employment, total (% of total employment)	-	-	-	-	-	-
Wage and salaried workers, female (% of females employed)	-	-	-	-	-	-
Wage and salary workers, male (% of males employed)	-	-	-	-	-	-
Wage and salaried workers, total (% of total employment)	-	-	-	-	-	-
Contributing family workers, female (% of females employed)	-	-	-	-	-	-
Contributing family workers, male (% of males employed)	-	-	-	-	-	-
Contributing family workers, total (% of total employment)	-	-	-	-	-	-
GDP per person employed (constant 1990 PPP \$)	-	-	-	-	-	-
Employees, industry, female (% of female employment)	-	-	-	-	-	-
Employees, industry, male (% of male employment)	-	-	-	-	-	-
Employment in industry (% of total employment)	-	-	-	-	-	-
Child employment in manufacturing, female (% of female employment)	-	-	-	-	-	-
Child employment in manufacturing, male (% of male employment)	-	-	-	-	-	-
Child employment in manufacturing (% of economically active children)	-	-	-	-	-	-
Ratio of female to male wages in manufacturing (%)	-	-	-	-	-	-
Child employment in services, female (% of female employment)	-	-	-	-	-	-
Child employment in services, male (% of male employment)	-	-	-	-	-	-
Child employment in services (% of economically active children)	-	-	-	-	-	-
Employees, services, female (% of female employment)	-	-	-	-	-	-
Employees, services, male (% of male employment)	-	-	-	-	-	-
Employment in services (% of total employment)	-	-	-	-	-	-
Economically active children, female (% of female population)	-	-	-	-	-	-
Economically active children, male (% of male population)	-	-	-	-	-	-
Economically active children, study and work, female (% of female population)	-	-	-	-	-	-
Economically active children, study and work, male (% of male population)	-	-	-	-	-	-
Economically active children, study and work (% of economically active children)	-	-	-	-	-	-
Economically active children, work only, female (% of female population)	-	-	-	-	-	-
Economically active children, work only, male (% of male population)	-	-	-	-	-	-
Economically active children, work only (% of economically active children)	-	-	-	-	-	-
Economically active children, total (% of children aged 5-14)	-	-	-	-	-	-
Labor participation rate, female (% of female population)	36.20	36.70	37.20	38.00	38.50	-
Labor participation rate, male (% of male population)	65.70	65.70	65.80	65.80	66.00	-
Labor participation rate, total (% of total population aged 15+)	51.00	51.20	51.50	51.80	52.20	-
Part time employment, female (% of total female employment)	-	-	-	-	-	-
Part time employment, male (% of total male employment)	-	-	-	-	-	-
Part time employment, female (% of total part time employment)	-	-	-	-	-	-
Part time employment, total (% of total employment)	-	-	-	-	-	-
Labor force with primary education, female (% of female labor force)	-	-	-	-	-	-
Labor force with primary education, male (% of male labor force)	-	-	-	-	-	-
Labor force with primary education (% of total labor force)	-	-	-	-	-	-

Labor force with secondary education, female (% of	-	-	-	-	-	-
Labor force with secondary education, male (% of m	-	-	-	-	-	-
Labor force with secondary education (% of total)	-	-	-	-	-	-
Labor force with tertiary education, female (% of fem	-	-	-	-	-	-
Labor force with tertiary education, male (% of male	-	-	-	-	-	-
Labor force with tertiary education (% of total)	-	-	-	-	-	-
Labor force, female (% of total labor force)	35.49	35.87	36.19	36.79	37.02	-
Labor force, total	178,937.58	182,086.50	185,521.12	188,961.07	192,877.28	-
Unemployment, youth female (% of female labor forc	-	-	-	-	-	-
Unemployment, youth male (% of male labor force a	-	-	-	-	-	-
Unemployment, youth total (% of total labor force ag	-	-	-	-	-	-
Long-term unemployment, female (% of female unemp	-	-	-	-	-	-
Long-term unemployment, male (% of male unempl	-	-	-	-	-	-
Long-term unemployment (% of total unemployment)	-	-	-	-	-	-
Unemployment with primary education, female (% of	-	-	-	-	-	-
Unemployment with primary education, male (% of r	-	-	-	-	-	-
Unemployment with primary education (% of total un	-	-	-	-	-	-
Unemployment with secondary education, female (%	-	-	-	-	-	-
Unemployment with secondary education, male (% c	-	-	-	-	-	-
Unemployment with secondary education (% of total	-	-	-	-	-	-
Unemployment with tertiary education, female (% of	-	-	-	-	-	-
Unemployment with tertiary education, male (% of m	-	-	-	-	-	-
Unemployment with tertiary education (% of total un	-	-	-	-	-	-
Unemployment, female (% of female labor force)	-	-	-	-	-	-
Unemployment, male (% of male labor force)	-	-	-	-	-	-
Unemployment, total (% of total labor force)	-	-	-	-	-	-
Emigration rate of tertiary educated (% of total tertia	-	-	-	-	-	-
Net migration	(66.00)	-	-	-	-	(5,000.00)
Refugee population by country or territory of asylum	-	-	1.00	1.00	1.00	-
Refugee population by country or territory of origin	29.00	66.00	63.00	50.00	45.00	-
International migrant stock, total	33,976.00	-	-	-	-	39,474.00
International migrant stock (% of population)	6.80	-	-	-	-	7.53
Prevalence of undernourishment (% of population)	-	-	14.00	-	-	-
Depth of hunger (kilocalories per person per day)	-	180.00	200.00	-	-	-
Consumption of iodized salt (% of households)	-	-	-	-	-	-
Vitamin A supplementation coverage rate (% of chilc	-	-	-	-	-	-
Adolescent fertility rate (births per 1,000 women age	42.15	41.07	40.00	39.05	37.97	-
Completeness of infant death reporting (% of reporte	-	-	61.75	-	-	-
Completeness of total death reporting (% of reporte	-	-	87.45	-	-	-
Mortality rate, adult, female (per 1,000 female adults	147.20	145.74	144.27	142.39	140.09	-
Mortality rate, adult, male (per 1,000 male adults)	265.99	264.55	263.12	260.92	257.97	-
Birth rate, crude (per 1,000 people)	19.98	19.61	19.28	18.98	18.72	-
Death rate, crude (per 1,000 people)	7.57	7.57	7.58	7.58	7.58	-
Contraceptive prevalence (% of women ages 15-49)	-	45.60	-	-	-	-
Mortality rate, infant (per 1,000 live births)	27.50	26.50	25.50	24.60	23.60	-
Life expectancy at birth, female (years)	72.20	72.36	72.53	72.72	72.91	-
Life expectancy at birth, total (years)	68.50	68.66	68.83	69.02	69.22	-
Life expectancy at birth, male (years)	64.98	65.13	65.31	65.50	65.71	-
Fertility rate, total (births per woman)	2.50	2.47	2.43	2.40	2.37	-
Survival to age 65, female (% of cohort)	76.30	76.57	76.84	77.14	77.47	-
Survival to age 65, male (% of cohort)	61.68	61.97	62.26	62.61	63.01	-
Wanted fertility rate (births per woman)	-	-	-	-	-	-

Female headed households (% of households with a female head)	-	-	-	-	-	-
Teenage mothers (% of women ages 15-19 who have ever had a child)	-	-	-	-	-	-
Population ages 0-14 (% of total)	29.79	29.62	29.42	29.18	28.91	-
Population ages 15-64 (% of total)	64.13	64.23	64.36	64.51	64.71	-
Population ages 65 and above (% of total)	6.08	6.15	6.23	6.30	6.38	-
Age dependency ratio (% of working-age population)	55.94	55.68	55.38	55.01	54.53	-
Age dependency ratio, old (% of working-age population)	9.48	9.58	9.67	9.77	9.86	-
Age dependency ratio, young (% of working-age population)	46.46	46.11	45.71	45.24	44.67	-
Population growth (annual %)	1.21	1.10	1.00	0.93	0.89	-
Researchers in R&D (per million people)	-	-	-	-	-	-
Technicians in R&D (per million people)	-	-	-	-	-	-
Population, total	499,759.00	505,283.00	510,366.00	515,124.00	519,740.00	-
Population, female (% of total)	49.80	49.84	49.86	49.87	49.88	-
Completeness of birth registration, rural (%)	-	95.00	-	-	-	-
Completeness of birth registration, urban (%)	-	97.60	-	-	-	-
Completeness of birth registration (%)	-	96.60	-	-	-	-
Rural population	130,437.10	130,160.90	129,735.04	129,193.10	128,583.68	-
Rural population growth (annual %)	(0.16)	(0.21)	(0.33)	(0.42)	(0.47)	-
Rural population (% of total population)	26.10	25.76	25.42	25.08	24.74	-
Urban population growth (annual %)	1.70	1.56	1.46	1.38	1.34	-
Urban population	369,321.90	375,122.10	380,630.96	385,930.90	391,156.32	-
Urban population (% of total)	73.90	74.24	74.58	74.92	75.26	-
Unmet need for contraception (% of married women)	-	-	-	-	-	-
International tourism, number of arrivals	160,000.00	153,000.00	163,000.00	-	-	-
International tourism, number of departures	-	-	-	-	-	-
International tourism, receipts (current US\$)	96,000,000.00	109,000,000.00	73,000,000.00	83,000,000.00	70,000,000.00	-
International tourism, receipts (% of total exports)	6.78	7.74	4.55	4.17	4.14	-
International tourism, receipts for passenger transport (% of total receipts)	51,000,000.00	14,000,000.00	6,000,000.00	6,000,000.00	6,000,000.00	-
International tourism, expenditures for passenger transport (% of total expenditures)	77,000,000.00	15,000,000.00	6,000,000.00	5,000,000.00	3,000,000.00	-
International tourism, receipts for travel items (current US\$)	45,000,000.00	95,000,000.00	67,000,000.00	77,000,000.00	64,000,000.00	-
International tourism, expenditures for travel items (current US\$)	17,000,000.00	18,000,000.00	22,000,000.00	30,000,000.00	32,000,000.00	-
International tourism, expenditures (current US\$)	94,000,000.00	33,000,000.00	28,000,000.00	35,000,000.00	35,000,000.00	-
International tourism, expenditures (% of total imports)	6.10	2.57	1.86	2.00	2.21	-
Merchandise trade (% of GDP)	115.16	102.71	99.16	100.47	-	-
Import volume index (2000 = 100)	155.08	140.11	134.03	147.14	138.44	-
Binding coverage, manufactured products (%)	-	-	17.00	-	-	18.14
Bound rate, simple mean, manufactured products (%)	-	-	17.18	-	-	16.47
Share of tariff lines with international peaks, manufactured products (%)	-	-	37.62	-	-	31.05
Tariff rate, applied, simple mean, manufactured products (%)	-	-	10.56	-	-	10.39
Tariff rate, most favored nation, simple mean, manufactured products (%)	-	-	8.84	-	-	8.62
Share of tariff lines with specific rates, manufactured products (%)	-	-	-	-	-	-
Tariff rate, applied, weighted mean, manufactured products (%)	-	-	10.92	-	-	10.38
Tariff rate, most favored nation, weighted mean, manufactured products (%)	-	-	11.65	-	-	10.38
Binding coverage, all products (%)	-	-	26.34	-	-	27.63
Bound rate, simple mean, all products (%)	-	-	18.46	-	-	18.06
Share of tariff lines with international peaks, all products (%)	-	-	39.41	-	-	36.16
Tariff rate, applied, simple mean, all products (%)	-	-	11.49	-	-	11.62
Tariff rate, most favored nation, simple mean, all products (%)	-	-	9.96	-	-	10.28
Share of tariff lines with specific rates, all products (%)	-	-	-	-	-	-
Tariff rate, applied, weighted mean, all products (%)	-	-	11.82	-	-	11.86
Tariff rate, most favored nation, weighted mean, all products (%)	-	-	13.45	-	-	11.86
Binding coverage, primary products (%)	-	-	56.84	-	-	56.67

Bound rate, simple mean, primary products (%)	-	-	19.82	-	-	19.78
Share of tariff lines with international peaks, primary	-	-	47.98	-	-	54.30
Tariff rate, applied, simple mean, primary products ('	-	-	17.74	-	-	18.31
Tariff rate, most favored nation, simple mean, prima	-	-	13.39	-	-	15.05
Share of tariff lines with specific rates, primary prod	-	-	-	-	-	-
Tariff rate, applied, weighted mean, primary product:	-	-	15.94	-	-	15.04
Tariff rate, most favored nation, weighted mean, prin	-	-	21.75	-	-	15.04
Agricultural raw materials imports (% of merchandise	0.04	0.03	0.03	0.02	-	-
Food imports (% of merchandise imports)	9.53	9.71	11.25	11.66	-	-
Fuel imports (% of merchandise imports)	17.16	19.07	15.95	15.56	-	-
ICT goods imports (% total goods imports)	4.18	3.21	4.89	-	-	-
Insurance and financial services (% of commercial s	1.51	1.77	1.80	2.12	2.20	-
Manufactures imports (% of merchandise imports)	40.88	38.60	47.55	47.67	-	-
Ores and metals imports (% of merchandise imports)	0.30	0.22	0.16	0.14	-	-
Merchandise imports from economies in the Arab W	0.02	4.05	0.02	0.02	0.03	-
Merchandise imports (current US\$)	1,049,926,000.00	1,013,000,000.00	1,044,269,000.00	1,304,332,000.00	1,160,000,000.00	-
Merchandise imports from high-income economies (	82.19	78.85	82.60	79.03	80.12	-
Merchandise imports from developing economies ou	11.23	13.70	10.22	12.03	12.19	-
Merchandise imports from developing economies in	8.82	7.44	8.71	10.81	10.19	-
Merchandise imports from developing economies in	-	-	-	-	-	-
Merchandise imports from developing economies in	8.44	7.76	8.23	9.23	8.36	-
Merchandise imports from developing economies in	0.01	4.04	0.01	0.01	0.02	-
Merchandise imports from developing economies in	1.98	1.86	1.18	0.81	1.67	-
Merchandise imports from developing economies in	0.05	0.04	0.03	0.03	0.03	-
Merchandise imports by the reporting economy, resi	(1.87)	(0.31)	(1.04)	(0.28)	(0.67)	-
Merchandise imports by the reporting economy (curr	914,896,600.00	993,959,700.00	1,223,839,000.00	1,446,256,000.00	1,397,079,000.00	-
Merchandise imports from developing economies wi	8.44	7.76	8.23	9.23	8.36	-
Import value index (2000 = 100)	199.44	192.45	198.36	247.76	220.91	-
Computer, communications and other services (% o	53.71	65.69	68.21	65.07	59.06	-
Commercial service imports (current US\$)	339,200,000.00	250,100,000.00	292,200,000.00	366,700,000.00	245,500,000.00	-
Transport services (% of commercial service imports	39.79	25.22	22.46	24.55	25.70	-
Travel services (% of commercial service imports)	4.98	7.32	7.53	8.26	13.03	-
Net barter terms of trade index (2000 = 100)	128.46	156.03	154.36	153.72	151.00	-
Export volume index (2000 = 100)	151.32	137.36	149.10	168.81	150.82	-
Agricultural raw materials exports (% of merchandise	0.03	0.03	0.03	0.03	-	-
Food exports (% of merchandise exports)	1.27	1.25	1.42	2.23	-	-
Fuel exports (% of merchandise exports)	2.88	4.73	4.50	10.99	-	-
ICT goods exports (% of total goods exports)	-	-	-	-	-	-
Insurance and financial services (% of commercial s	0.37	0.38	0.55	0.49	0.46	-
Manufactures exports (% of merchandise exports)	1.77	1.90	1.39	1.74	-	-
Ores and metals exports (% of merchandise exports)	0.15	0.23	0.35	0.30	-	-
Merchandise exports to economies in the Arab Worl	-	-	-	-	-	-
Merchandise exports (current US\$)	997,000,000.00	1,175,000,000.00	1,359,000,000.00	1,743,000,000.00	1,450,000,000.00	-
Merchandise exports to high-income economies (%)	91.45	88.36	91.55	92.61	92.96	-
Merchandise exports to developing economies outsi	3.05	2.89	4.46	2.28	3.08	-
Merchandise exports to developing economies in Ea	-	-	-	-	-	-
Merchandise exports to developing economies in Eu	0.01	0.65	2.25	0.01	0.02	-
Merchandise exports to developing economies in La	5.50	8.75	3.99	5.11	3.97	-
Merchandise exports to developing economies in Mi	-	-	-	-	-	-
Merchandise exports to developing economies in Sc	0.51	0.20	0.08	0.10	0.12	-
Merchandise exports to developing economies in Su	1.77	1.69	1.84	1.86	1.93	-
Merchandise exports by the reporting economy, resi	(0.00)	0.00	(0.00)	(0.00)	(0.00)	-

Merchandise exports by the reporting economy (current US\$)	951,077,200.00	1,231,327,000.00	1,393,352,000.00	1,580,562,000.00	1,343,908,000.00	-
Merchandise exports to developing economies within the reporting economy	5.50	8.75	3.99	5.11	3.97	-
Export value index (2000 = 100)	249.98	294.38	340.62	436.95	363.41	-
Computer, communications and other services (% of commercial service exports)	36.80	42.92	58.05	58.06	67.33	-
Commercial service exports (current US\$)	182,600,000.00	210,600,000.00	210,000,000.00	232,500,000.00	256,500,000.00	-
High-technology exports (current US\$)	2,236,379.00	1,295,835.00	1,711,049.00	4,069,885.00	-	-
High-technology exports (% of manufactured exports)	13.57	6.05	9.41	13.85	-	-
Transport services (% of commercial service exports)	38.41	11.68	9.69	8.16	7.42	-
Travel services (% of commercial service exports)	24.42	45.01	31.71	33.29	24.80	-
Battle-related deaths (number of people)	-	-	-	-	-	-
Internally displaced persons (number, high estimate)	-	-	-	-	-	-
Internally displaced persons (number, low estimate)	-	-	-	-	-	-
Intentional homicides, UN Crime Trends Survey (CT)	7.60	13.66	-	-	-	-
Intentional homicides, international public health sources	2.20	-	-	-	-	-
Intentional homicides, international police sources (including UN)	-	-	-	-	-	-
Intentional homicides, government police sources (including UN)	-	-	-	-	-	-
Presence of peace keepers (number of troops, police and military observers)	-	-	-	-	-	-